



AERONS (INDIA)

AERONS (INDIA)  
EXIM PVT LTD



PROFESSIONAL AUDIO EQUIPMENT

60 years

Pro Audio Equipment

ESTD.: 1962

2022 (Vol. 1)



Fidek®



Visiting Card





Dynamic Audio Solutions

### K-LA28

- 2 x 8" Customized Beyma driver, 2" voice coil, 200W(AES)
- 1 x Customized Beyma driver, 1" exit, 1.75" voice coil, 50W(AES)
- A.E.S POWER - LF: 400W, HF: 50W
- 128dB Maximum SPL
- 60Hz-20KHz Frequency Response

### K-LA210

- 2 x 10" Customized Beyma driver, 2.5" voice coil, 250W(AES)
- 1 x Customized Beyma driver, 1.4" exit, 2.84" voice coil, 70W(AES)
- A.E.S POWER - LF: 500W, HF: 70W
- 133dB Maximum SPL
- 57Hz-20KHz Frequency Response



### K-LA218

#### PRO9.0

- 2x1000W@8Ωstereo
- 2x1500W@4Ωstereo
- 2x1950W@2Ωstereo
- 3000W@8Ωbridge
- 3900W@4Ωbridge

#### PRO12.0

- 2x1200W@8Ωstereo
- 2x1800W@4Ωstereo
- 2x2000W@2Ωstereo
- 3600W@8Ωbridge
- 4000W@4Ωbridge



### K-LA28

### K-LA210

### K-LA218

K-LA218 is built with 2 customized Audiocenter 18" LF drivers with 4" voice coil, D.F.L. (Dual Frequency Loading) technology and advanced cooling system, which ensures very low power compression and high SPL, increases response speed and decreases inertial offset at the most.

- Powerful, deep and dynamic bass
- 2 x Customized Audiocenter 18"LF drivers with 4"voice coil
- D.F.L.(Dual Frequency Loading) technology
- 32Hz extremely low LF extension
- A.E.S POWER - 2000W





# BrainCore™

## Technology Inside

BrainCore™ is an innovative core application technology researched and developed by Audiocenter, devoted to Audiocenter active DSP-controlled loudspeakers with supreme performance and high reliability.

### SA312 & SA315

- Active DSP Controlled Full Range
- 1x12" Customized LF driver with 2.5" voice coil (SA312)
- 1x15" Customized LF driver with 3" voice coil (SA315)
- 1 Customized HF driver with 1.75" voice coil
- Class D Amplifier with 2000W power(peak)
- 132dB and 134dB max SPL respectively
- 60° X 40° Directivity
- Solid wood Cabinet



### L65 + L65S

### MA12 & MA15

- Active DSP Controlled Full Range in plastic enclosure
- 1x12" Customized LF driver (MA12)
- 1x15" Customized LF driver (MA15)
- 1 Customized HF driver
- Class D Amplifier with 1600W power(peak)
- 133dB and 134dB max SPL respectively
- In built EQ
- Advanced cooling system



### SA312

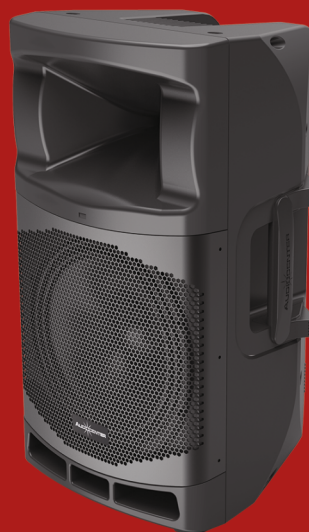


### SA315

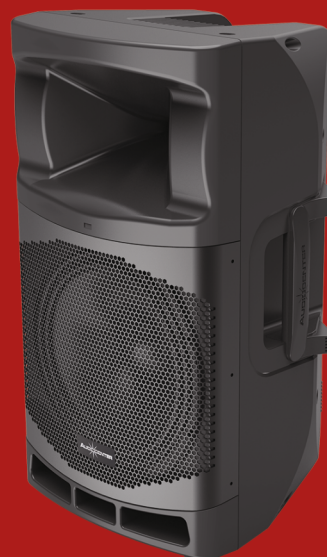
### L65+L65S

L65+L65S system is a compact multi-purpose active DSP column system consisting of a passive full-range column speaker L65 and an active DSP controlled compact single 18" subwoofer L65S.

- Active DSP-controlled Column Speaker System
- Customized ferrite driver, 1 pcs 18" LF driver (L65S)
- Customized ferrite driver, 6pcs 5" LF Driver (L65)
- Customized ferrite driver, 4pcs 1" HF drivers (L65)
- 110° X 10° Dispersion
- 24bit precision Controlled by DSP
- Class D amplifier, Power 3600W
- 20Hz-20KHz(±0.5dB) Frequency Response
- In-Built Bluetooth



### MA12



### MA15

02



## SK-8BT

- 1 x 8" Speaker
- 1 x 1" Compression Driver [HD 25]
- 75W Maximum Power for Amplifier
- 1 Wireless VHF Hand Microphone
- 2 Wire Microphone Input
- 1 Line input / output
- Mp3 Player with USB/SD Card
- Direct Record to USB
- Upto 2 hrs Battery



## SK-10BT

- 1 x 10" Speaker
- 1 x 1" Compression Driver [HD 25]
- 75W RMS Power for Amplifier
- 1 Wireless VHF Hand Microphone
- 2 Wire Microphone Input
- 1 Line input / output
- Mp3 Player with USB/SD Card
- Direct Record to USB
- Upto 4 hrs Battery Backup

## SK-12BT

- 1 x 1" Compression Driver [HD 25]
- 100W RMS Power for Amplifier
- 2 Wireless VHF Hand Microphone
- 2 Wire Microphone Input
- 1 Line input / output
- Mp3 Player with USB/SD Card
- Rechargeable 12V battery
- Upto 4 hrs Battery Backup



## SK-15BT

- 1 x 15" Speaker
- 1 x 1" Compression Driver [HD 25]
- 100W RMS Power for Amplifier
- 2 Wireless VHF Hand Microphone
- 2 Wire Microphone Input
- 1 Line input / output
- Mp3 Player with USB/SD Card
- Rechargeable 12V battery
- Upto 6 hrs Battery Backup



## PORTABLE SPEAKER SYSTEM



### APS-312A

- 1 X 12" Speaker
- 1 x 1.34" Compression Driver
- 350W RMS Power for Amplifier
- 1 Wire Microphone Input
- 1 Line input and 1 Mix Output
- Mp3 Player with USB/SD card
- In-Built Bluetooth
- Direct Record to USB



### APS-315A

- 1 X 15" Speaker
- 1 x 1.75" Compression Driver
- 350W RMS Power for Amplifier
- 1 Wire Microphone Input
- 1 Line input and 1 Mix Output
- Mp3 Player with USB/SD card
- In-Built Bluetooth
- Direct Record to USB

### INSTALL 300MKII

- 1 X 12" Speaker
- 1 x 1" Compression Driver
- 400W RMS Power for Amplifier
- 1 Wire Microphone Input
- 1 Line input and 1 Mix Output
- Mp3 Player with USB/SD card
- In-Built Bluetooth
- Direct Record to USB



### INSTALL 400MKII

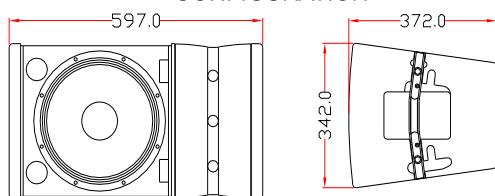
- 1 X 15" Speaker
- 1 x 1" Compression Driver
- 400W RMS Power for Amplifier
- 1 Wire Microphone Input
- 1 Line input and 1 Mix Output
- Mp3 Player with USB/SD card
- In-Built Bluetooth
- Direct Record to USB



## LA3032 V2

- 1X12" (300mm)/3.5" voice coil Neo LF driver
- 3x1" (25mm)/1.4" voice coil Neo HF driver
- Rated Power: 750W
- Peak Power: 1500W
- Sensitivity: 99Db 1watt/1Metre
- Maximum SPL: 129dB
- Frequency Response: 50Hz- 20kHz  $\pm$ 3dB

### CONFIGURATION

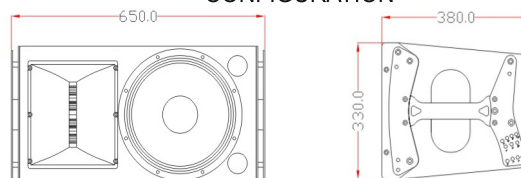


## TT LA112

- 1X12" (300mm)/3.5" voice coil Neo LF driver
- 1x1.4" (36mm)/ 3.5" voice coil Neo MF driver
- 1x1.4" (36mm)/1.7" voice coil Neo HF driver
- Rated Power: 800W
- Peak Power: 3200W
- Sensitivity: 98Db 1watt/1Metre
- Frequency Response: 50Hz- 20kHz  $\pm$ 3dB
- Maximum SPL: 133dB



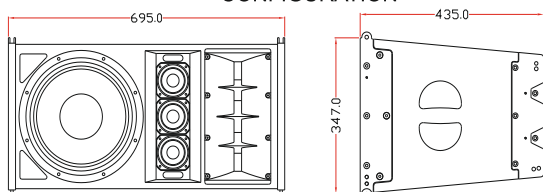
### CONFIGURATION



## HDLA8055 V2

- 1X12" (300mm)/3.5" voice coil Neo LF driver
- 3x3" (83mm)/ 0.8" voice coil Neo MF driver
- 2x1" (25mm)/1.7" voice coil Neo HF driver
- Rated Power: 1000W
- Peak Power: 4000W
- Sensitivity: 100dB 1watt/1Metre
- Frequency Response: 55Hz- 18kHz  $\pm$ 3dB
- Maximum SPL: 132dB

### CONFIGURATION





# ANALOG MIXER



## AMX SERIES



### AMX6U

- 6 Mic/Line +1 Stereo channel
- Build in 16-bit digital DSP effect.
- 3 Band EQ per channel.
- Built-in MP3 player with Bluetooth
- USB Port for Mp3 & Recording
- 1 AUX sending



### AMX8U

- 8 Mic/Line +1 Stereo channel
- Build in 16-bit digital DSP effect.
- 3 Band EQ per channel.
- Built-in Mp3 player with Bluetooth
- USB Port for Mp3 & Recording
- 1 AUX sending



### AMX12U

- 12 Mic/Line +1 Stereo channel
- Build in 16-bit digital DSP effect.
- 3 Band EQ per channel.
- Built-in Mp3 player with Bluetooth
- USB Port for Mp3 & Recording
- 1 AUX sending

## SG SERIES



### SG803U

- 8 Mic/Line +1 Stereo channel
- Build in 16-bit digital DSP effect.
- 3 Band EQ per channel.
- Dual 7 band GEQ
- Built-in MP3 player with Bluetooth
- USB Port for MP3 & Recording
- 3 AUX sending & 1 Return



### SG1203U

- 12 Mic/Line +1 Stereo channel
- Build in 16-bit digital DSP effect.
- 3 Band EQ per channel.
- Dual 7 band GEQ
- Built-in MP3 player with Bluetooth
- USB Port for MP3 & Recording
- 3 AUX sending & 1 Return



### SG1603U

- 16 Mic/Line +1 Stereo channel
- Build in 16-bit digital DSP effect.
- 3 Band EQ per channel.
- Dual 7 band GEQ
- Built-in MP3 player with Bluetooth
- USB Port for MP3 & Recording
- 3 AUX sending & 1 Return

## ASM SERIES



### ASM22

- 18 Mic/Line +4 Stereo channel
- Build in 32-bit digital DSP effect.
- 3 Band EQ per channel.
- Dual 7 band GEQ
- Built-in MP3 player with Bluetooth
- USB Port for MP3 & Recording
- 3 AUX sending & 2 Return
- Dual effects
- Group 1-2 and 3-4



## R SERIES



	RMS Power, 8Ω	RMS Power, 4Ω	RMS Power, 8Ω(BRIDGE)
<b>R1000</b>	2x350W	2x550W	1x960W
<b>R2400</b>	2x500W	2x800W	1x1600W
<b>R3200</b>	2x900W	2x1500W	1x3000W

## AJ SERIES

	Dynamic Power, 8Ω	Dynamic Power, 4Ω	Dynamic Power, 8Ω(BRIDGE)
<b>AJ2504</b>	4x150W	4x250W	2x500W
<b>AJ4002</b>	2x250W	2x400W	1x800W
<b>AJ7003</b>	2x450W + 800W	2x700W + 1200W	-
<b>AJ11002</b>	2x700W	2x1100W	1x2200W
<b>AJ15002</b>	2x1000W	2x1500W	1x3000W



## HD SERIES



	RMS Power, 8Ω	RMS Power, 4Ω	RMS Power, 2Ω	RMS Power, 8Ω(BRIDGE)	RMS Power, 4Ω(BRIDGE)
<b>HD4001</b>	2x600W	2x1000W	2x1300W	1x2000W	1x2600W
<b>HD5001</b>	2x1000W	2x1600W	2x2000W	1x3200W	1x4000W
<b>HD7001</b>	2x1300W	2x2000W	2x2600W	1x4000W	1x5200W
<b>HD9001</b>	2x1500W	2x2400W	2x3100W	1x4800W	1x6200W



## LA SERIES

	RMS Power, 8Ω	RMS Power, 4Ω	RMS Power, 8Ω(BRIDGE)
<b>LA6004</b>	4x400W	4x660W	2x1300W
<b>LA14004</b>	4x800W	4x1400W	2x2800W
<b>LA18004</b>	4x1100W	4x1800W	2x3600W
<b>LA21004</b>	4x1300W	4x2100W	2x4200W





# POWER AMPLIFIER



## CA SERIES



	RMS Power,8Ω	RMS Power,4Ω	RMS Power,2Ω	RMS Power, 8Ω(BRIDGE)	RMS Power, 4Ω(BRIDGE)
<b>P7000II</b>	2x800W	2x1350W	2x1625W	1x2700W	1x3250W
<b>CA 4000II</b>	2x800W	2x1350W	2x1625W	1x2700W	1x3250W
<b>CA 5000II</b>	2x1000W	2x1600W	2x2100W	1x3400W	1x4100W



## CA SERIES

	RMS Power,8Ω	RMS Power,4Ω	RMS Power,2Ω	RMS Power, 8Ω(BRIDGE)	RMS Power, 4Ω(BRIDGE)
<b>CA 4500II</b>	2x800W	2x1300W	2x1500W	1x3000W	1x3600W
<b>CA 6500II</b>	2x1500W	2x2000W	2x2500W	1x4000W	1x5000W
<b>CA 8500II</b>	2x1800W	2x3000W	2x3400W	1x6000W	1x6800W



## RMX HD SERIES



	RMS Power,8Ω	RMS Power,4Ω	RMS Power,2Ω	RMS Power, 8Ω(BRIDGE)	RMS Power, 4Ω(BRIDGE)
<b>RMX HD4050II</b>	2x1050W	2x1550W	2x2200W	1x3100W	1x4400W
<b>RMX HD5050II</b>	2x1100W	2x1800W	2x2500W	1x3600W	1x5000W
<b>RMX HD6050II</b>	2x1150W	2x1850W	2x2550W	1x3700W	1x5100W



## SUB SERIES

	RMS Power,8Ω	RMS Power,4Ω	RMS Power,2Ω	RMS Power, 8Ω(BRIDGE)	RMS Power, 4Ω(BRIDGE)
<b>SUB8K</b>	2x1600W	2x2600W	2x4200W	1x5200W	1x8400W
<b>SUB12K</b>	2x2100W	2x3500W	2x6000W	1x7000W	1x12000W





## LF18X451

**18"** /460mm  
CHASSIS DIAMETER

**1800w (RMS)**  
POWER HANDLING

**97**<sub>dB</sub>  
SENSITIVITY (1w/1m)

**30 Hz - 1000Hz**  
FREQUENCY RESPONSE

**4.5"** /115mm  
VOICE COIL SIZE



## 18TBW100

**18"** /460mm  
CHASSIS DIAMETER

**1500w (RMS)**  
POWER HANDLING

**96**<sub>dB</sub>  
SENSITIVITY (1w/1m)

**35 Hz - 1000Hz**  
FREQUENCY RESPONSE

**4"** /101.6mm  
VOICE COIL SIZE



## 18FE1000

**18"** /460mm  
CHASSIS DIAMETER

**1000w (RMS)**  
POWER HANDLING

**96.2**<sub>dB</sub>  
SENSITIVITY (1w/1m)

**41 Hz - 2000Hz**  
FREQUENCY RESPONSE

**4"** /99.5mm  
VOICE COIL SIZE



## 18TBW115

**18"** /460mm  
CHASSIS DIAMETER

**1800w (A.E.S)**  
POWER HANDLING

**96**<sub>dB</sub>  
SENSITIVITY (1w/1m)

**38 Hz - 1500Hz**  
FREQUENCY RESPONSE

**4.5"** /114.15mm  
VOICE COIL SIZE





# SPEAKER COMPONENT



## MB15N351

**15"** /380mm  
CHASSIS DIAMETER

**650w (RMS)**  
POWER HANDLING

**99** dB  
SENSITIVITY (1w/1m)

**40 Hz - 3kHz**  
FREQUENCY RESPONSE

**3.4"** /87mm  
VOICE COIL SIZE



## PRO153F02

**15"** /380mm  
CHASSIS DIAMETER

**500w (RMS)**  
POWER HANDLING

**98** dB  
SENSITIVITY (1w/1m)

**49 Hz - 3.5kHz**  
FREQUENCY RESPONSE

**3"** /75mm  
VOICE COIL SIZE



## 15PL76II

**15"** /380mm  
CHASSIS DIAMETER

**400w (RMS)**  
POWER HANDLING

**97** dB  
SENSITIVITY (1w/1m)

**42 Hz - 3.5kHz**  
FREQUENCY RESPONSE

**3"** /76.2mm  
VOICE COIL SIZE



## 15FW76II

**15"** /380mm  
CHASSIS DIAMETER

**500w (RMS)**  
POWER HANDLING

**98** dB  
SENSITIVITY (1w/1m)

**40 Hz - 3kHz**  
FREQUENCY RESPONSE

**3"** /76.2mm  
VOICE COIL SIZE





## MB12N351

**12"** /300mm  
CHASSIS DIAMETER

**650w** (RMS)  
POWER HANDLING

**98**<sub>dB</sub>  
SENSITIVITY (1w/1m)

**45 Hz - 3000Hz**  
FREQUENCY RESPONSE

**3.4"** /87mm  
VOICE COIL SIZE



**NEO**

## PRO123F01

**12"** /300mm  
CHASSIS DIAMETER

**500w** (RMS)  
POWER HANDLING

**97.3**<sub>dB</sub>  
SENSITIVITY (1w/1m)

**45 Hz - 3500Hz**  
FREQUENCY RESPONSE

**3"** /75mm  
VOICE COIL SIZE



## 12FW76II

**12"** /300mm  
CHASSIS DIAMETER

**450w** (RMS)  
POWER HANDLING

**97**<sub>dB</sub>  
SENSITIVITY (1w/1m)

**50 Hz - 4000Hz**  
FREQUENCY RESPONSE

**3"** /75.5mm  
VOICE COIL SIZE



## LF12G301

**12"** /300mm  
CHASSIS DIAMETER

**450w** (RMS)  
POWER HANDLING

**95**<sub>dB</sub>  
SENSITIVITY (1w/1m)

**40 Hz - 2000Hz**  
FREQUENCY RESPONSE

**3"** /76.2mm  
VOICE COIL SIZE





# SPEAKER COMPONENT



## HF300TI

- 220W Continuous program power
- 500-18 KHz Frequency range
- 74.4mm Voice coil
- 109 dB Sensitivity



## DE750TN

- 220W Continuous program power
- 500-18KHz Frequency range
- 74.46mm Voice coil
- 107 dB Sensitivity



## DE85TN

- 220W Continuous program power
- 500-18KHz Frequency range
- 74.46mm Voice coil
- 107 dB Sensitivity



## HF520

- 150W Continuous max power
- 1.3K-20KHz Frequency range
- 51.6mm Voice coil
- 109 dB Sensitivity



## HF520S

- 150W Continuous max power
- 1.3K-20KHz Frequency range
- 51.6mm Voice coil
- 109 dB Sensitivity



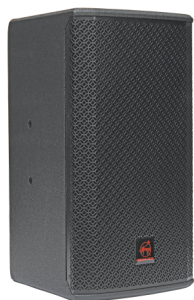
## HF34N

- 60 W Continuous program power
- 1500-18 KHz Frequency range
- 34.4mm Voice coil
- 108 dB Sensitivity

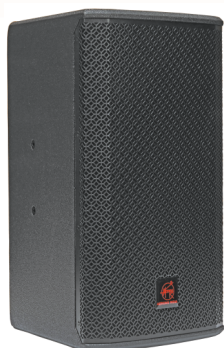




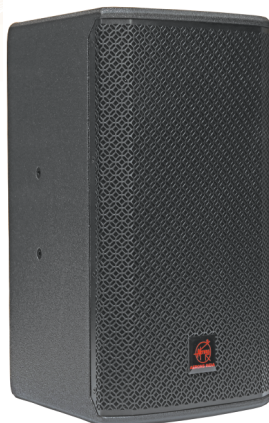
## AI SERIES



**AI 16**



**AI 26**



**AI 28**

### AI 16

- 1 X 6.5"(165mm)/2" voice coil LF
- 1X1"(25mm)/ 1" voice coil HF
- 200 Watts RMS power
- 90 dB Sensitivity

### AI 26

- 2 X 6.5"(165mm)/2" voice coil LF
- 1X1"(25mm)/ 1" voice coil HF
- 400 Watts RMS power
- 93 dB Sensitivity

### AI 28

- 2 X 8"(200mm)/2" voice coil LF
- 1X1"(25mm)/ 1.4" voice coil HF
- 450 Watts RMS power
- 96 dB Sensitivity

### AI 112 SUB

- 1 X 12"(300mm)/3" voice coil LF
- 500 Watts RMS power
- 96 dB Sensitivity
- 40Hz to 200Hz Frequency Response

### AI 118 SUB

- 1 X 18"(460mm)/4.5" voice coil LF
- 1500 Watts RMS power
- 99 dB Sensitivity
- 40Hz to 150Hz Frequency Response

## AI 118SUB



## AI 112SUB



## NF SERIES (WATERPROOF)

- IP46 Rated Waterproof Speakers



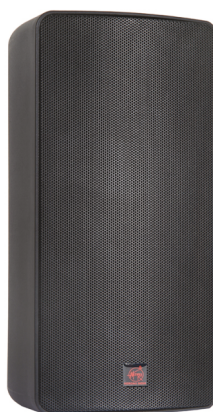
**NF-4W**

- 1 X 4"(100mm)/1" voice coil LF
- 1X0.8"(20mm)/ Dome Tweeter
- 40 Watts RMS power
- 88 dB Sensitivity
- 16 Ohms Impedance



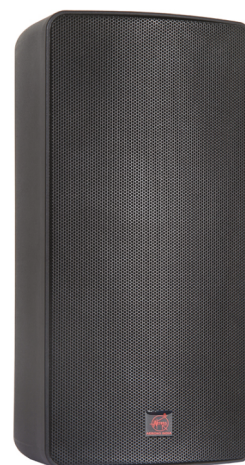
**NF-4BT**

- 1 X 4"(100mm)/1" voice coil LF
- 1X0.8"(20mm)/ Dome Tweeter
- 10W/20W/40W/OFF/16Ω
- 88 dB Sensitivity
- 16 Ohms Impedance



**NF-6BT**

- 1 X 6"(150mm)/1.5" voice coil LF
- 1X1"(25mm)/ 1" voice coil HF
- 20W/40W/80W/OFF/16Ω
- 89 dB Sensitivity
- 16 Ohms Impedance



**NF-8BT**

- 1 X 8"(200mm)/2" voice coil LF
- 1X1"(25mm)/ 1" voice coil HF
- 37.5W/75W/150W/OFF/16Ω
- 88 dB Sensitivity
- 16 Ohms Impedance





## AA SERIES



AUDIBLE AVENUE LLP



### AA3M

- 1x6.5" (165mm) Faltalpro 3FE25
- 16 ohms Impedance
- 20 watts RMS power
- 91dB Sensitivity
- 107dB Peak SPL
- 170Hz to 18Khz Frequency Response
- 60° x 60° Dispersion



### AA6F

- 1x6" Faltalpro 6FE100
- 1x HF DE250 Aerons India
- 1x Horn Aerons India
- 8 ohms Impedance
- 100 watts RMS power
- 92dB Sensitivity, 115dB Peak SPL
- 70Hz to 18Khz Frequency Response



### AA8M

- 1x8" Faltalpro 8FE200
- 1x HF DE250 Aerons India
- 1x Horn Aerons India
- 8 ohms Impedance
- 130 watts RMS power
- 96dB Sensitivity, 120dB Peak SPL
- 110Hz to 18Khz Frequency Response



### AA B10

- 1x10" Faltalpro 10RS350
- 8 ohms Impedance
- 300 watts RMS power, 600 watts Peak Power
- 93dB Sensitivity
- 120dB Peak SPL
- 49Hz to 300Khz Frequency Response
- Omni Directional Dispersion
- Subwoofer cabinet, 6th order band pass

## V4000

- Output power: 1200W at 8Ω; 2000W at 4Ω
- Output power 100V: 1200W per Channel
- Stereo and Parallel output modes
- Tunnel-type cooling ensure much higher efficiency and stable performance
- Neutrik 3-pin electronically balanced XLR as input, and LINK plugs R
- Neutrik SpeakON as output, and one 100V four-pole touch-proof terminal strip R
- 32dB/1V/0.775V input sensitivity selection
- Multiple protection functions: Soft start, VHF, DC, Short Circuit, Clip, Over heat



**For further Details, Please Contact:**

**Join For Latest  
Product Updates**



To improve the Quality & Performance of the Product, the Specifications & design can be changed without prior notice.



**AERONS (INDIA)**

**AERONS (INDIA) EXIM PVT. LTD**

C-155, Naraina Industrial Area, Phase-1, New Delhi-110028 (INDIA)  
Phone: 011-35001090, 8929923030 | E-mail : sales@aeronsindia.com  
[www.aeronsindia.com](http://www.aeronsindia.com)

**Website**



**Scan For  
Online Purchase**

